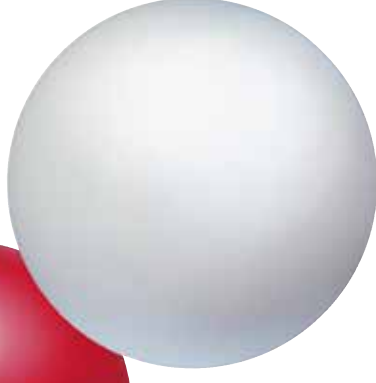
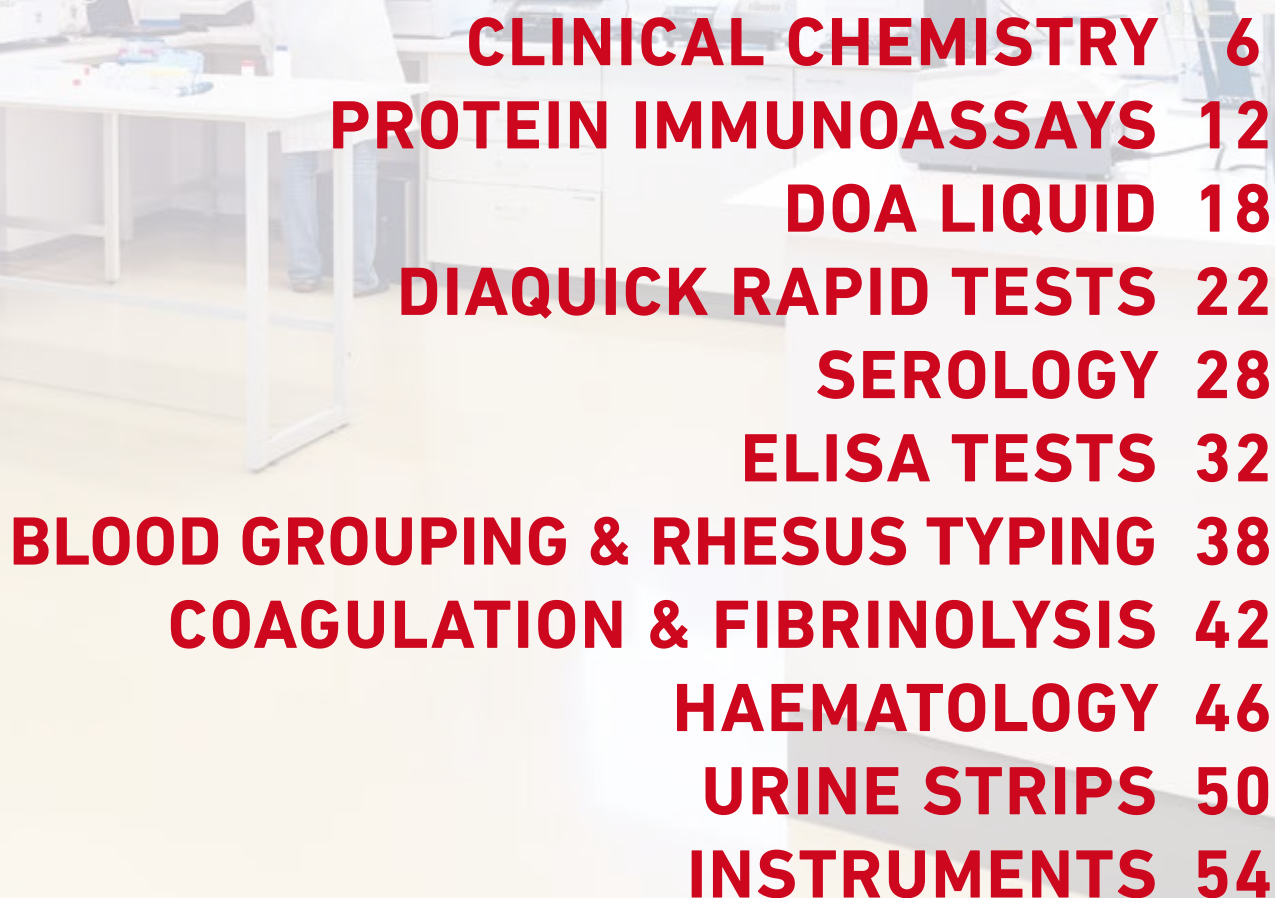


DMB[®]



INDEX



CLINICAL CHEMISTRY	6
PROTEIN IMMUNOASSAYS	12
DOA LIQUID	18
DIAQUICK RAPID TESTS	22
SEROLOGY	28
ELISA TESTS	32
BLOOD GROUPING & RHESUS TYPING	38
COAGULATION & FIBRINOLYSIS	42
HAEMATOLOGY	46
URINE STRIPS	50
INSTRUMENTS	54

CLINICAL CHEMISTRY



CLINICAL CHEMISTRY

Reagents



	Method	Configuration	CE
Adenosine Deaminase (ADA)	Enzymatic, colorimetric	2 reagents	✓
Albumin	BCG	Single reagent	✓
Alkaline Phosphatase	opt. DGKC	2 reagents	✓
Alkaline Phosphatase	mod. IFCC	2 reagents	✓
Ammonia	Enzymatic, UV	Single reagent	✓
alpha-Amylase	CNP-G3	Single reagent	✓
alpha-Amylase	mod. IFCC	2 reagents	✓
alpha-Amylase Pancreatic	ET-G7PNP	2 reagents	✓
Bile Acids	Enzymatic cycling	2 reagents	✓
Bilirubin Auto Direct	DCA	2 reagents	✓
Bilirubin Auto Total	DCA	2 reagents	✓
Bilirubin Direct	Jendrassik Grof	2 reagents	✓
Bilirubin Total	Jendrassik Grof	2 reagents	✓
Calcium	Arsenazo	Single reagent	✓
Calcium	CPC	2 reagents	✓
Carbon Dioxide (CO₂)	PEP-C	Single reagent	✓
Chloride	Mercuric thiocyanate	Single reagent	✓
Cholesterol	CHOD-PAP	Single reagent	✓
Cholesterol HDL Direct	Immuno-inhibition	2 reagents	✓
Cholesterol HDL Precipitant	Precipitation	Single Reagent	✓
Cholesterol LDL Direct	Enzymatic selective protection	2 reagents	✓
Cholesterol LDL Precipitant	Precipitation	Single Reagent	✓
Cholinesterase	opt. DGKC	2 reagents	✓
CK-MB	opt. DGKC / IFCC	2 reagents	✓
CK-NAC	opt. DGKC / IFCC	2 reagents	✓
Copper	3,5-DiBr-PAESA	Single reagent	✓
Creatinine	mod. Jaffe	2 reagents	✓
Creatinine	Enzymatic, PAP	2 reagents	✓
Ethanol	Enzymatic, UV	2 reagents	✓
Fructosamine	NBT	2 reagents	✓
G6PDH	UV, kinetic	2 reagents*	✓
G6PDH Deficiency Screen	Qualitative, visual	2 reagents*	✓
G6PDH Lyse Reagent	for G6PDH, UV, kinetic	Single reagent	✓
gamma-GT	Szasz, stand. to IFCC	2 reagents	✓
GLDH	DGKC	2 reagents	✓
Glucose	GOD-PAP	Single reagent	✓
Glucose	Hexokinase	2 reagents	✓
GOT (AST)	mod. IFCC	2 reagents	✓
GPT (ALT)	mod. IFCC	2 reagents	✓

*powder

CLINICAL CHEMISTRY

Reagents



	Method	Configuration	CE
HbA1c Direct	Immunturbidimetric	2 reagents	✓
alpha-HBDH	opt. DGKC	2 reagents	✓
Hemoglobin Total	Cyanmethemoglobin	Single reagent	✓
Homocysteine	Enzymatic cycling	2 reagents	✓
beta-Hydroxybutyrate	Enzymatic	2 reagents	✓
Iron	Ferene	2 reagents	✓
Lactate	Enzymatic, UV	2 reagents	✓
LDH-L	IFCC	2 reagents	✓
LDH-P	opt. DGKC	2 reagents	✓
Lipase	Enzymatic, colorimetric	2 reagents	✓
Lithium	Enzymatic	2 reagents	✓
Magnesium	Xylidyl blue	Single reagent	✓
NEFA	ACOD-PAP	2 reagents	✓
Phosphorus Inorganic	Molybdate	Single reagent	✓
Potassium	Enzymatic	2 reagents	✓
Protein Total	Biuret	2 reagents	✓
Protein Total Mono	Biuret	Single reagent	✓
Protein Total in Urine/CSF	Pyrogallol red	Single reagent	✓
Pyridoxal-5'-Phosphate	for GOT (AST) and GPT (ALT)	Single reagent	✓
Sodium	Enzymatic	2 reagents	✓
Triglycerides	GPO-PAP	Single reagent	✓
UIBC	Ferene	2 reagents	✓
Urea	Urease/colorimetric	3 reagents	✓
Urea UV Auto	Urease/GLDH	2 reagents	✓
Uric Acid AOX	Enzymatic, colorimetric	2 reagents	✓
Uric Acid TBHBA	Enzymatic, colorimetric	2 reagents	✓
Zinc	5-Br-PAPS	Single reagent	✓



CLINICAL CHEMISTRY

Standards



	Concentration	CE
Albumin	5 g/dL	✓
Ammonia	approx. 250 µmol/L	✓
Bile Acids	50 µmol/L	✓
Calcium	10 mg/dL	✓
Chloride	100 mmol/L	✓
Cholesterol	200 mg/dL	✓
CO ₂	30 mmol/L	✓
Copper	100 µg/dL	✓
Creatinine	2 mg/dL	✓
Glucose	100 mg/dL	✓
beta-Hydroxybutyrate	1 mmol/L	✓
Iron	100 µg/dL	✓
Lithium	3 / 5 level set	✓
Magnesium	2 mg/dL	✓
NEFA	1 mmol/L	✓
Phosphorus	5 mg/dL	✓
Potassium	2 level set	✓
Protein Total	5 g/dL	✓
Protein Total in Urine/CSF	Urine: 1300 mg/L, CSF: 1100 mg/L	✓
Sodium	2 level set	✓
Triglycerides	200 mg/dL	✓
Urea	50 mg/dL	✓
Uric Acid	6 mg/dL	✓
Zinc	200 µg/dL	✓



CLINICAL CHEMISTRY

Calibrators



	Description	CE
Diacal Auto*	multi calibration serum	✓
Diacal Lipids*	lipid calibration plasma	✓
Diacal CK-MB*	1 level	✓
ADA*	1 level	✓
Ethanol	2 level set	✓
G6PDH*	1 level	✓
Hemoglobin Total*	1 level	✓
HbA1c Direct*	5 level series	✓
HDL-Cholesterol*	1 level	✓
LDL-Cholesterol*	1 level	✓
Homocysteine	5 level set	✓

*lyophilised

Controls

	Description	CE
Diacon N*	multi control serum, normal	✓
Diacon P*	multi control serum, abnormal	✓
Diacon Lipids*	lipid control serum, normal	✓
Diacon Lipids High*	lipid control serum, abnormal	✓
Diacon Urine	multi control urine, level 1 / level 2	✓
ADA*	2 level set	✓
Ammonia	2 level set	✓
CO₂	1 level	✓
Ethanol	2 level set	✓
G6PDH*	3 level set	✓
HbA1c Direct*	2 level set	✓
Hemoglobin Total*	3 level set	✓
Homocysteine	4 level set	✓
Lithium*	2 level set	✓
Potassium*	2 level set	✓

*lyophilised

PROTEIN IMMUNOASSAYS



PROTEIN IMMUNOASSAYS

Reagents



	Configuration	CE
alpha-1 Acid Glycoprotein	Ab Reagent + Buffer	✓
alpha-1 Antitrypsin	Ab Reagent + Buffer	✓
alpha-1 Microglobulin	Latex Reagent + Buffer	✓
alpha-2 Macroglobulin	Ab Reagent + Buffer	✓
Antithrombin III	Ab Reagent + Buffer	✓
APO A1	Ab Reagent + Buffer	✓
APO B	Ab Reagent + Buffer	✓
ASO	Latex Reagent + Buffer	✓
beta-2 Microglobulin	Latex Reagent + Buffer	✓
C1 Esterase Inhibitor	Ab Reagent + Buffer	✓
Ceruloplasmin	Ab Reagent + Buffer	✓
Complement C3	Ab Reagent + Buffer	✓
Complement C4	Ab Reagent + Buffer	✓
CRP	Ab Reagent + Buffer	✓
CRP HS	Latex Reagent + Buffer	✓
CRP Uhs	Latex Reagent + Buffer	✓
Cystatin C	Latex Reagent + Buffer	✓
D-Dimer	Latex Reagent + Buffer	✓
Ferritin	Latex Reagent + Buffer	✓
Ferritin Auto	Latex Reagent + Buffer	✓
Fibrinogen	Ab Reagent + Buffer	✓
Haptoglobin	Ab Reagent + Buffer	✓
HbA1c Direct	Ab Reagent + Latex Reagent	✓
Hemolysis Reagent		✓
IgA	Ab Reagent + Buffer	✓
IgE	Latex Reagent + Buffer	✓
IgG	Ab Reagent + Buffer	✓
IgM	Ab Reagent + Buffer	✓
Kappa Light Chain	Ab Reagent + Buffer	✓
Lambda Light Chain	Ab Reagent + Buffer	✓
Lp(a)	Latex Reagent + Buffer	✓
Microalbumin	Ab Reagent + Buffer	✓
Myoglobin	Latex Reagent + Buffer	✓
Prealbumin	Ab Reagent + Buffer	✓
Procalcitonin	Latex Reagent + Buffer	✓
RF	Ab Reagent + Buffer	✓
Transferrin	Ab Reagent + Buffer	✓
Vitamin D	Latex Reagent + Buffer	✓

PROTEIN IMMUNOASSAYS

Calibrators



	Description	CE
alpha-1 Microglobulin	1 level	✓
APO A1/A2/B*	1 level	✓
ASO	low / high / super high	✓
beta-2 Microglobulin	4 level series	✓
CRP	low / high / super high / 5 level series	✓
CRP HS	1 level	✓
CRP Uhs	5 level series, universal / high sensitivity range	✓
Cystatin C	1 level	✓
D-Dimer*	5 level series	✓
Ferritin	5 level series	✓
Ferritin Auto	5 level series	✓
Fibrinogen*	1 level	✓
HbA1c Direct*	5 level series	✓
IgE	5 level series	✓
Lp(a)	low / high / 4 level series	✓
Microalbumin	high / 5 level series	✓
Myoglobin	4 level series	✓
Pediatric	1 level	✓
Procalcitonin*	6 level series	✓
Protein	low / high / 5 level series	✓
RF	low / high / super high / 5 level series	✓
Transferrin	5 level series	✓
Vitamin D	5 level series	✓

*lyophilised



PROTEIN IMMUNOASSAYS

Controls



	Description	CE
alpha 1-Microglobulin	1 level	✓
APO A1/A2/B*	1 level	✓
ASO	1 level	✓
beta 2-Microglobulin	1 level	✓
CRP	low / high	✓
CRP HS	1 level	✓
CRP Uhs	2 level set, universal / high sensitivity range	✓
Cystatin C	2 level set	✓
D-Dimer*	2 level set	✓
Ferritin	low / high	✓
Ferritin Auto	low / high	✓
Fibrinogen*	1 level	✓
HbA1c Direct*	2 level set	✓
IgE	low / high	✓
Lp(a)	low / high	✓
Microalbumin	1 level	✓
Myoglobin	2 level set	✓
Pediatric	1 level	✓
Procalcitonin*	2 level set	✓
Protein	low / high	✓
RF	1 level	✓
Triple (ASO,CRP,RF)	1 level	✓
Vitamin D	2 level set	✓

*lyophilised



DOA LIQUID



DOA LIQUID

Reagents



		Sample type	CE
Amphetamine	AMP	Urine	✓
Barbiturate	BAR	Urine	✓
Buprenorphine	BUP	Urine	✓
Benzodiazepine	BZO	Urine	✓
Cocaine	COC	Urine	✓
Cotinine	COT	Urine	✓
Ecstasy	MDMA	Urine	✓
Methamphetamine	MET	Urine	✓
Methadone	MTD	Urine	✓
Opiate	OPI	Urine	✓
Phencyclidine	PCP	Urine	✓
Propoxyphene	PPX	Urine	✓
Cannabinoids / Marihuana	THC	Urine	✓
Spice	JWH-018	Urine	✓
Spice	UR-144	Urine	✓

Calibrator / Control Sets

		Levels	CE
Amphetamine	AMP	7 level set	✓
Barbiturate	BAR	6 level set	✓
Buprenorphine	BUP	8 level set	✓
Benzodiazepine	BZO	6 level set	✓
Cocaine	COC	7 level set	✓
Cotinine	COT	6 level set	✓
Ecstasy	MDMA	7 level set	✓
Methamphetamine	MET	7 level set	✓
Methadone	MTD	7 level set	✓
Opiate	OPI	7 level set	✓
Phencyclidine	PCP	7 level set	✓
Propoxyphene	PPX	7 level set	✓
Cannabinoids / Marihuana	THC	12 level set	✓
Spice	JWH-018	7 level set	✓
Spice	UR-144	7 level set	✓
DOA Multi-Analyte		7 level set	✓

DIAQUICK RAPID TESTS



DIAQUICK RAPID TESTS

Drugs of Abuse Urine Tests



		Format	CE
Amphetamine	AMP	Cassette / Dipstick	✓
Barbiturates	BAR	Cassette / Dipstick	✓
Buprenorphine	BUP	Cassette	✓
Benzodiazepines	BZO	Cassette / Dipstick	✓
Cocaine	COC	Cassette / Dipstick	✓
Ethylglucuronide	ETG	Cassette	✓
Fentanyl	FYL	Cassette	✓
Spice, Synthetic Marijuana	K2	Cassette	✓
Ketamine	KET	Cassette	✓
Ectasy	MDMA	Cassette / Dipstick	✓
Methamphetamine	MET	Cassette / Dipstick	✓
Methadone	MTD	Cassette / Dipstick	✓
Opiates, Morphine, Heroin	MOP	Cassette / Dipstick, 300 ng/mL	✓
Opiates, Morphine, Heroin	OPI	Cassette, 2000 ng/mL	✓
Phencyclidine	PCP	Dipstick	✓
Tricyclic Antidepressants	TCA	Cassette	✓
Marijuana / Cannabis	THC	Cassette / Dipstick	✓
Tramadol	TRA	Cassette	✓
Multi-3 Drug	Various combinations	Panel	✓
Multi-4 Drug	Various combinations	Panel	✓
Multi-5 Drug	Various combinations	Panel	✓
Multi-6 Drug	Various combinations	Panel	✓
Multi-7 Drug	Various combinations	Panel	✓
Multi-10 Drug	Various combinations	Panel	✓
DOA Multi-6 Cup			✓

Drugs of Abuse Saliva Tests

	Method	CE
Alcohol Saliva Strip	Colorimetric saliva test	✓
DOA Saliva Multi-Test	High sensitive saliva test	✓

DIAQUICK RAPID TESTS

Infectious Diseases



	Format	Sample Type	CE
Adenovirus	Cassette	Faeces	✓
Chlamydia	Cassette	Cervical urethral swab / urine	✓
Dengue Ag/Ab Combo	Cassette	Serum / plasma / whole blood	✓
Dengue IgG/IgM Ab	Cassette	Serum / plasma / whole blood	✓
Dengue NS1 Ag	Cassette	Serum / plasma / whole blood	✓
H. pylori Ab	Cassette	Serum / plasma / whole blood	✓
H. pylori Stool Ag	Cassette	Faeces	✓
Influenza A/B	Dipstick	Nasal throat swab	✓
Malaria P.f.	Cassette	Whole blood	✓
Malaria P.f./Pan	Cassette	Whole blood	✓
Mononucleosis	Cassette	Serum / plasma / whole blood	✓
Rotavirus	Cassette	Faeces	✓
Rota / Adeno Combi	Cassette	Faeces	✓
S. typhi IgG/IgM Ab	Cassette	Serum / plasma / whole blood	✓
S. typhi /paratyphi Ag	Cassette	Faeces / serum / plasma / whole blood	✓
Strep. A	Cassette / Dipstick	Throat swab	✓
Syphilis	Cassette / Dipstick	Serum / plasma / whole blood	✓

AIDS, Hepatitis

	Format	Sample Type	CE
HBsAb	Dipstick	Serum / plasma	
HBsAg	Cassette / Dipstick	Serum / plasma / whole blood	
HCV Ab	Cassette	Serum / plasma / whole blood	
HIV Ab	Cassette	Serum / plasma / whole blood	
HIV Triline 1/2/O	Cassette	Serum / plasma / whole blood	

ToRCH

	Format	Sample Type	CE
Toxoplasma IgM	Cassette	Serum / plasma	✓
Toxoplasma IgG/IgM	Cassette	Serum / plasma	
Rubella IgM	Cassette	Serum / plasma	✓
CMV IgM	Cassette	Serum / plasma	✓
HSV 1/2 IgM	Cassette	Serum / plasma	✓

DIAQUICK RAPID TESTS

Pregnancy / Fertility



	Format	Sample Type	CE
hCG	Cassette / Dipstick	Urine	✓
hCG Combo	Cassette / Dipstick	Urine / serum	✓
LH	Cassette / Dipstick	Urine	✓

Tumour Markers

	Format	Sample Type	CE
AFP	Cassette	Serum / plasma / whole blood	✓
CEA	Cassette	Serum / plasma / whole blood	✓
FOB	Cassette	Faeces	✓
FOB-TRF Combi	Cassette	Faeces	✓
PSA	Cassette	Serum / plasma / whole blood	✓

Cardiac Markers

	Format	Sample Type	CE
Troponin I	Cassette	Serum / plasma / whole blood	✓
Cardiac Combo	Cassette	Serum / plasma / whole blood	✓

Others

	Format	Sample Type	CE
CRP	Cassette	Serum / plasma / whole blood	✓
Microalbumin	Dipstick	Urine	✓

SEROLOGY



SEROLOGY

Latex- & Haemagglutination



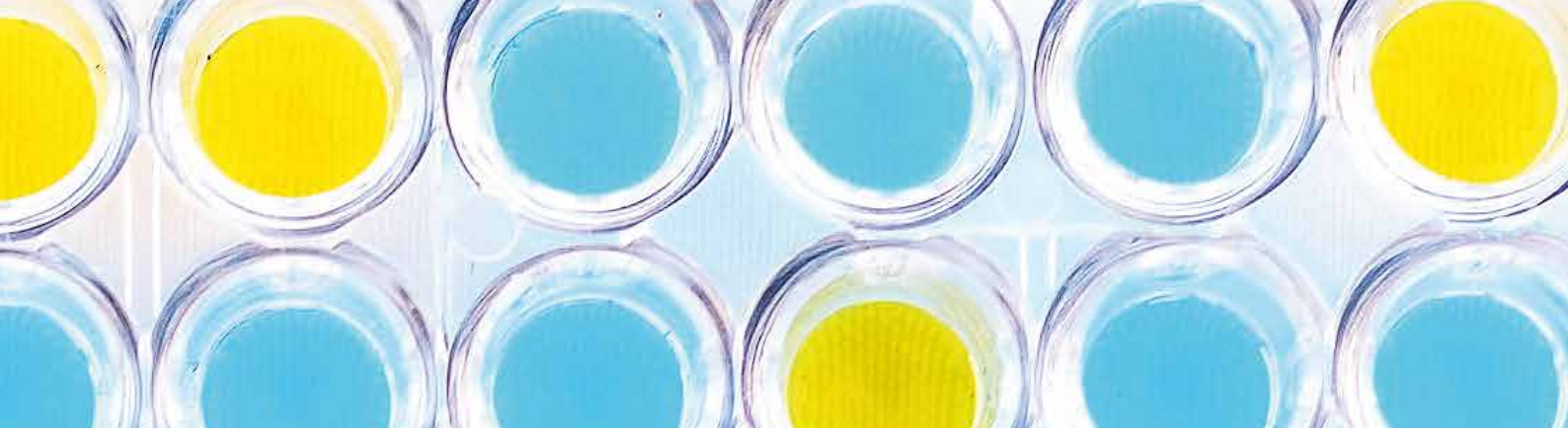
	Parameter	CE
ASO	Anti-Streptolysin O Ab	✓
CRP	C-reactive Protein	✓
IM	Infectious Mononucleosis heterophile Ab	✓
RF	Rheumatoid Factor	✓
SLE	Anti-Deoxyribonucleoprotein Ab	✓
Toxoplasma gondii	Anti-T.gondii Ab	
Waeler Rose	Rheumatoid Factor	✓

Bacterial Agglutination

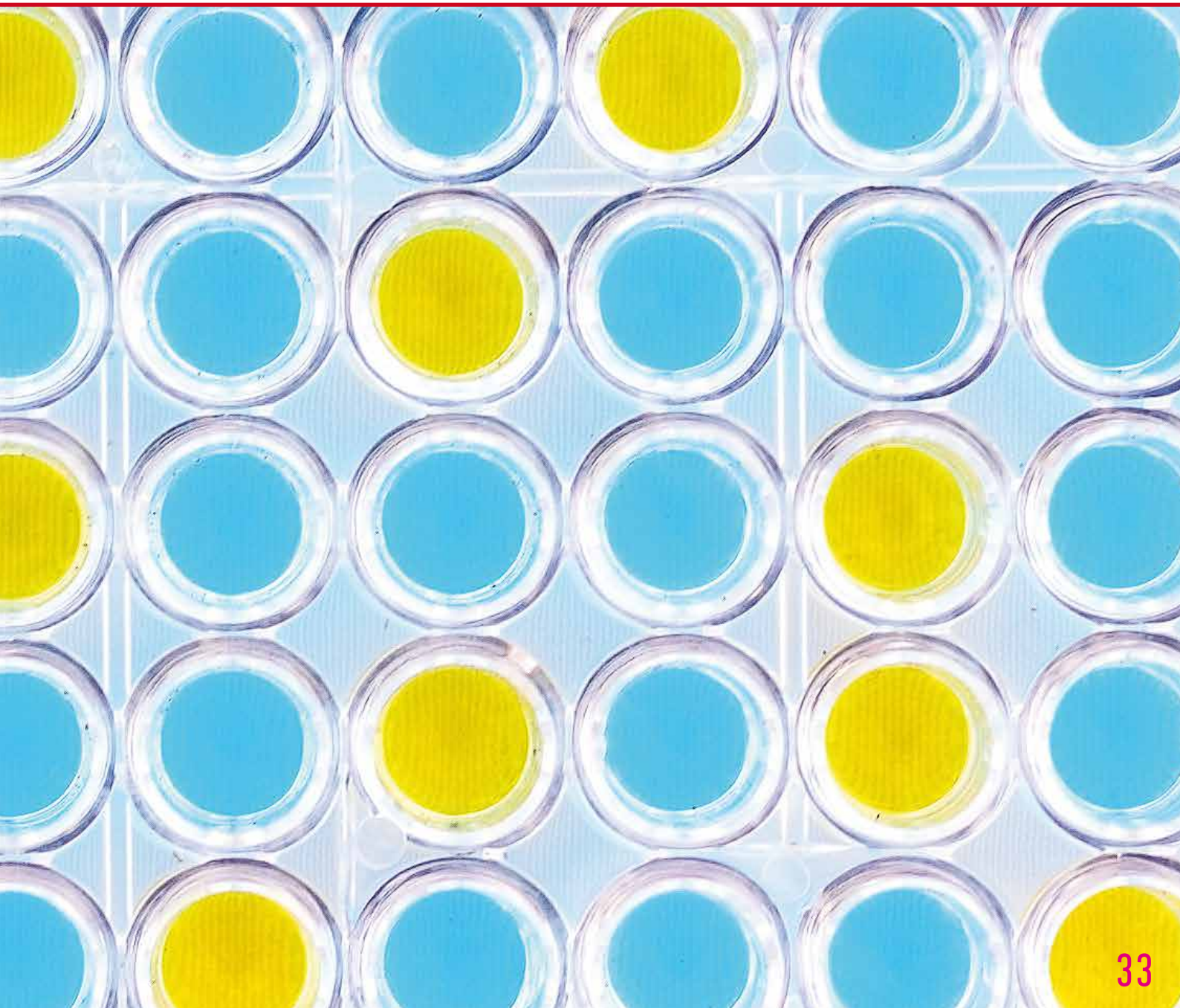
	Parameter	CE
Brucella abortus	Anti-Brucella Ab	✓
Proteus OX19	Anti-Rickettsia Ab	✓
Proteus OX2	Anti-Rickettsia Ab	✓
Proteus OXK	Anti-Rickettsia Ab	✓
Rose Bengal	Anti-Brucella Ab	✓
Salmonella paratyphi AH	Anti-Salmonella Ab	✓
Salmonella paratyphi AO	Anti-Salmonella Ab	✓
Salmonella paratyphi BH	Anti-Salmonella Ab	✓
Salmonella paratyphi BO	Anti-Salmonella Ab	✓
Salmonella paratyphi CH	Anti-Salmonella Ab	✓
Salmonella paratyphi CO	Anti-Salmonella Ab	✓
Salmonella typhi H	Anti-Salmonella Ab	✓
Salmonella typhi O	Anti-Salmonella Ab	✓
Salmonella total Kit	8 Salmonella reagents, optional controls	✓
Polyvalent Controls	Positive / negative, for bacterial agglutination assays	✓

Syphilis

	Parameter	CE
Syphilis RPR	Indirect Syphilis Test (Reagins)	✓
Syphilis TPHA	Anti-T.pallidum Ab	✓
Syphilis VDRL	Indirect Syphilis Test (Reagins)	✓



ELISA TESTS



ELISA TESTS

AIDS, Hepatitis



	Method	CE
HAV IgM	Cut-off	
HBcAb	Cut-off	
HBcIgM	Cut-off	
HBeAb	Cut-off	
HBeAg	Cut-off	
HBsAb	Cut-off	
HBsAb	Quantitative	
HBsAg Sensitive	Cut-off	✓
HCV Ab Sensitive	Cut-off	✓
HEV IgM	Cut-off	✓
HIV 1+2 Ab	Cut-off	✓
HIV 1+2 Ag/Ab	Cut-off	✓
HTLV 1+2	Cut-off	✓

ToRCH

	Method	CE
CMV IgG	Quantitative	✓
CMV IgM	Cut-off	✓
HSV 1 IgG	Quantitative	✓
HSV 1 IgM	Cut-off	✓
HSV 1+2 IgG	Quantitative	✓
HSV 1+2 IgM	Cut-off	✓
HSV 2 IgG	Quantitative	✓
HSV 2 IgM	Cut-off	✓
Rubella IgG	Quantitative	✓
Rubella IgM	Cut-off	✓
Toxoplasma IgG	Quantitative	✓
Toxoplasma IgM	Cut-off	✓

ELISA TESTS

Other Infectious Diseases



	Method	CE
Anti-Syphilis Ab	Cut-off	✓
Chlamydia trachomatis IgA	Cut-off	
Chlamydia trachomatis IgG	Cut-off	
Chlamydia trachomatis IgM	Cut-off	
H. pylori Ag	Cut-off	✓
H. pylori IgG	Cut-off	✓

Fertility

	Method	CE
Anti-Mullerian Hormone (AMH)	Quantitative	✓
Beta-hCG	Quantitative	✓
FSH	Quantitative	✓
LH	Quantitative	✓
Prolactin	Quantitative	✓

Tumour Markers

	Method	CE
AFP	Quantitative	✓
CEA	Quantitative	✓
Ferritin	Quantitative	✓
PSA	Quantitative	✓

ELISA TESTS

Autoimmune Diseases



	Method	CE
AMA-M2 IgG	Quantitative	✓
ANA Combi 8	Quantitative	✓
ANA Detect	Quantitative	✓
ANA Screen 8	Quantitative	✓
ANA-9-Line Immunoblot 08/16	Semi-quantitative	✓
ANCA Combi	Quantitative	✓
Anti-beta-2-Glycoprotein I IgG/IgM	Quantitative	✓
Anti-beta-2-Glycoprotein I Screen	Quantitative	✓
Anti-Cardiolipin IgA	Quantitative	✓
Anti-Cardiolipin IgG/IgM	Quantitative	✓
Anti-Cardiolipin Screen	Quantitative	✓
Anti-CRA	Quantitative	✓
Anti-DGP IgA	Quantitative	✓
Anti-DGP IgG	Quantitative	✓
Anti-ds DNA Screen	Quantitative	✓
Anti-Gliadin IgA	Quantitative	✓
AntiGliadin IgG	Quantitative	✓
Anti-Insulin	Quantitative	✓
Anti-Intrinsic Factor	Quantitative	✓
Anti-Phospholipid Screen IgG/IgM	Quantitative	✓
Anti-Transglutaminase IgA	Quantitative	✓
Anti-Transglutaminase IgG	Quantitative	✓
Anti-Transglutaminase Screen	Quantitative	✓
ENA-6 Screen	Cut-off	✓
Nucleo-9-Line Immunoblot 08/16	Semi-quantitative	✓
Rheumatoid Factor IgA	Quantitative	✓
Rheumatoid Factor IgG	Quantitative	✓



ELISA TESTS

Steroids



	Method	CE
17-alpha-OH Progesterone	Quantitative	✓
17-beta-Estradiol	Quantitative	✓
Androstenedione	Quantitative	✓
Cortisol	Quantitative	✓
DHEA-S	Quantitative	✓
Free Estriol	Quantitative	✓
Free Testosterone	Quantitative	✓
Progesterone	Quantitative	✓
Testosterone	Quantitative	✓
Total 25-OH Vitamin D	Quantitative	✓
Total Estriol	Quantitative	✓

Thyroids

	Method	CE
Anti-TG IgG	Quantitative	✓
Anti-TPO IgG	Quantitative	✓
FT3	Quantitative	✓
FT4	Quantitative	✓
T3	Quantitative	✓
T4	Quantitative	✓
Thyroglobulin	Quantitative	✓
TSH	Quantitative	✓



BLOOD GROUPING & RHESUS TYPING



BLOOD GROUPING & RHESUS TYPING

ABO & Rhesus Typing



CE

Anti-A, monoclonal	✓
Anti-B, monoclonal	✓
Anti-AB, monoclonal	✓
Anti-D (IgM/IgG), monoclonal	✓
Anti-A1 Lectin	
Anti-C, monoclonal	✓
Anti-E, monoclonal	✓
Anti-c, monoclonal	✓
Anti-e, monoclonal	✓
Anti-Cw, monoclonal	✓

Rare Blood Grouping Reagents

CE

Anti-H Lectin	✓
Anti-k, monoclonal	✓
Anti-K, monoclonal	

Auxiliary Reagents

CE

Anti-HG, polyspecific / monoclonal	✓
BSA 22%	✓
BSA 30%	✓
LISS Solution	✓
Papain	✓
Anti-D Negative Control	✓

COAGULATION & FIBRINOLYSIS



COAGULATION & FIBRINOLYSIS

Reagents



	Description	CE
Thromboplastin (PT) liquid	ISI 1.2-1.35	✓
Thromboplastin (PT)-S	ISI 1.15-1.3	✓
APTT-EA liquid	Ellagic acid activated	✓
APTT-S liquid	Silica activated	✓
Fibrinogen-Kit	Human, clotting	✓
Human Thrombin	For FIB, clotting	✓
Thrombin Time (TT), human	Human, clotting	✓
D-Dimer Latex Agglutination Kit	Manual, semi-quantitative	✓
D-Dimer for DIAcheck & Coalyser	Immunoturbidimetric	✓
Deficient Plasma Factor II	For PT	✓
Deficient Plasma Factor V	For PT	✓
Deficient Plasma Factor VII	For PT	✓
Deficient Plasma Factor VIII	For APTT	✓
Deficient Plasma Factor IX	For APTT	✓
Deficient Plasma Factor X	For PT	✓
Deficient Plasma Factor XI	For APTT	✓
Deficient Plasma Factor XII	For APTT	✓
Protein C Kit	Chromogenic	✓
Protein S Kit	Clotting	✓

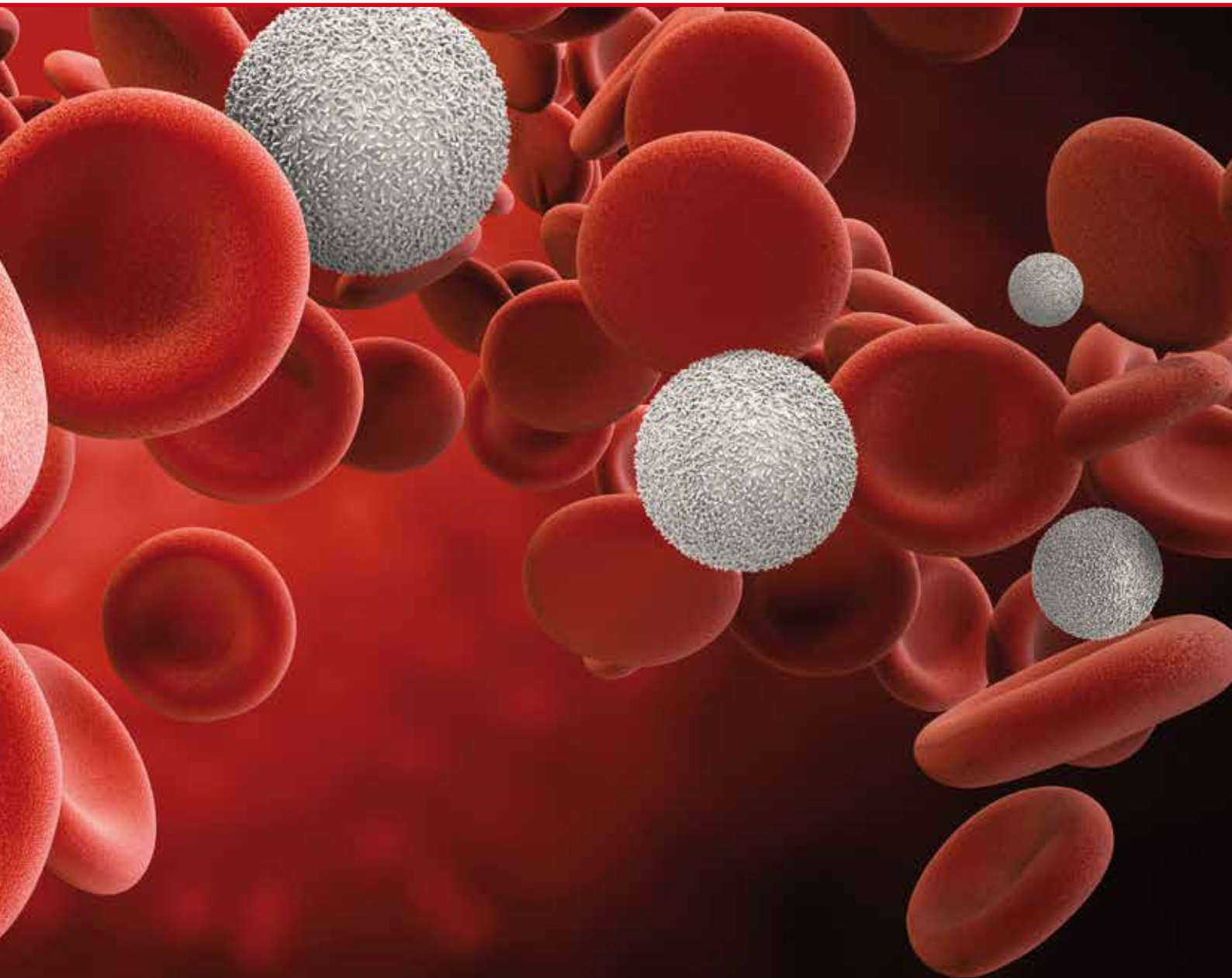
Auxiliary Reagents

	Description	CE
Calcium Chloride, 0.025 M	For APTT-S	✓
Calcium Chloride, 0.020 M	For APTT-EA	✓
Imidazole Buffered Saline	For FIB	✓

Control & Reference Plasmas

	Description	CE
Normal Coagulation Reference Plasma	For PT, FIB	✓
Normal Coagulation Control Plasma	For PT, APTT, FIB, TT	✓
Abnormal Coagulation Control Plasma	For PT, APTT, FIB, TT	✓
Special Calibration Plasma	For Deficient Plasma Factors, Prot. S, Prot. C	✓
Special Control Plasma Normal	For Deficient Plasma Factors, Prot. S, Prot. C	✓
Special Control Plasma Abnormal	For Deficient Plasma Factors, Prot. S, Prot. C	✓

HAEMATOLOGY



HAEMATOLOGY

Haemalyser



5 Diff Haematology Analyser
28 parameters, 2 Histograms, 2 Scattergrams
3D topographic map for WBC
≥ 60 samples/hr
Autoloader with cap piercing
Up to 5 racks with 10 samples each
Continuous loading (max 25 racks/run)
Laser scatter technology
Impedance for RGB, WBC
Photometric for HGB
Constant linear sheath flow
Whole blood mode or prediluted mode
10µL whole blood, 20 µL prediluted test
Compatible with most collection/primary tubes
RBC aperture diameter: 60 µm
WBC aperture diameter: 85 µm



Solutions

CE

Diluent	Providing electrolyte environment and stable osmotic pressure for cell sorting. Used as sheath fluid	✓
Lyse D	For breaking RBC, for keeping different WBC in different size	✓
Lyse H	For breaking RBC, combined with HGB for determination of HGB concentration, shrinking of WBC	✓
Cleaner	For cleaning and rinsing the tube system	✓

URINE STRIPS



URINE STRIPS

Regular Strips



	Parameters	CE
Urine Strip 1	Glu	✓
Urine Strip 2	Glu, Ket	✓
Urine Strip 2MC	Mal, Cre	✓
Urine Strip 3A	Glu, pH, Pro	✓
Urine Strip 4	Glu, pH, Ket, Pro	✓
Urine Strip 4SG	Glu, SG, pH, Pro	✓
Urine Strip 9	Glu, Bil, Ket, SG, Blo, pH, Pro, Uro, Nit	✓
Urine Strip 10C	Glu, Bil, Ket, SG, Blo, pH, Pro, Uro, Nit, Leu	✓
Urine Strip 11	Glu, Bil, Ket, SG, Blo, pH, Pro, Uro, Nit, Leu, Asc	✓

Strip with Mesh Technology

	Parameters	CE
Urine Strip 10ME	SG, pH, Leu, Nit, Pro, Glu, Ket, Uro, Bil, Blo	✓

Control

	Parameters	CE
Urine Comby Control	Control set for the quality control of urine strips and analysers	✓

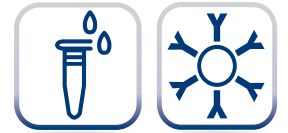


INSTRUMENTS



INSTRUMENTS

Photometer DTN-405



Semiautomatic photometer

Flow-cell or cuvette mode

Endpoint and kinetic tests

Internal thermal printer

Photometer with rotating filter wheel

5 standard filters: 340, 405, 505, 546, 578 nm

3 free slots for optional filters

Up to 60 methods programmable

30 μ L flow-cell

Tungsten halogen lamp

6" LCD display

CE marked



Photometer DTN-510K

Semiautomatic photometer

Flow-cell or cuvette mode

Endpoint and kinetic tests

Internal thermal printer

Photometer with rotating filter wheel

7 standard filters: 340, 405, 450, 500, 546, 578, 670 nm

1 free slot for optional filters

Up to 130 methods programmable

30 μ L flow-cell

Tungsten halogen lamp

7" color LCD display

CE marked



INSTRUMENTS

Autolyser 100



Fully automated chemistry analyser

Throughput: Up to 100 tests/hr

Stand alone device with built-in computer (touchscreen)

Photometer with rotating filter wheel

8 standard filters: 340, 405, 450, 510, 546, 578, 630, 670 nm

Tungsten halogen lamp

Disposable reaction cuvettes

Reagent cooling: No

No. of sampling arms: 1 + 1 mixing arm

Barcode readers for sample and reagents: not included

Water & Waste: external containers

CE marked



Autolyser

Fully automated chemistry analyser

Optional ISE (indirect): Na⁺, Cl⁻, K, Co₂

Throughput chemistry only: up to 250 tests/hr

Throughput with ISE: up to 220 tests/hr

Operated by external PC (PC not included)

Static photometer with 10 WL (340 - 700 nm)

Optical glass cuvettes with washing system

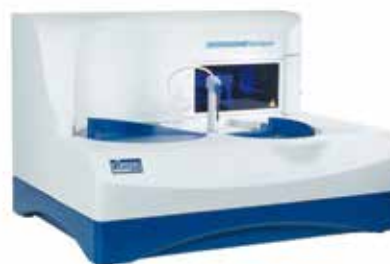
Reagent cooling: Yes

No. of sampling arms: 1

Barcode readers for samples and reagents: optional

Water & Waste: external containers

CE marked



Autolyser 450

Fully automated chemistry analyser

Optional ISE (direct or indirect): Na⁺, Cl⁻, K, Li

Throughput chemistry only: up to 450 tests/hr

Throughput with ISE: up to 690 tests/hr

Operated by external PC (PC not included)

Static photometer (no filter wheel)

14 filters: 340, 380, 405, 436, 478, 510, 546, 578, 600, 630, 660, 700, 740, 800 nm

Optical glass cuvettes with washing system

Reagent cooling: Yes

No. of sampling arms: 3

Barcode readers for samples and reagents: included

Water & Waste: external containers

CE marked



INSTRUMENTS

DIAREader ELX 800G



Semiautomatic ELISA reader

8 reading channels

8 positions filter wheel

Measuring range from 400 – 750 nm

Touchscreen

Internal printer

CE marked



DIAWasher ELX50

Semiautomatic ELISA washer

For washing single strips or full plates

Up to 100 washer programs storable

Wash, prime, rinse and aspiration programs

Shaking function

Liquid level alarm

CE marked



DIALISA 2MP

Fully automated 2 plate ELISA system

Easy-to-use software

Rapid pipetting speed

Optional barcode reader (samples)

Clot detection

CE marked



DIALISA 4MP

Fully automated 4 plate ELISA system

Rapid pipetting speed

Optional barcode reader (samples)

Modular construction

CE marked



INSTRUMENTS

DIACheck® C1



1 channel coagulometer

Fully optical measurement (620 nm)

Clotting, NOAC and immunoturbidimetric assays

Microvolumes (totally 75 µL)

External printer optional

Autostart

Up to 3 calibrations points

CE marked



DIACheck® C2 | C4

2 channel / 4 channel coagulometer

Fully optical measurement (405 nm)

Clotting, chromogenic, NOAC and immunoturbidimetric assays

Microvolumes (totally 75 µL)

External printer optional

Autostart

Up to 5 calibration points

CE marked



Coalyser

Fully automated Coagulation Analyser

Throughput: 137 PT/h, 60 APTT/h

Measuring volume: min. 150 µL

Colour touch screen

Up to 50 methods programmable

STAT and QC program

CE marked



INSTRUMENTS

DiaCheck[®] Pro

Blood Glucose Monitoring System



Methodology:	Electrochemistry, GDH-FAD
Coding:	Code free
Test range:	10 - 900 mg/dL (0.6 - 50 mmol/L)
Hematocrit range:	20 - 60%
In compliance with EN ISO 15197:2013	
CE marked	

Corresponding Blood Glucose Test Strips and Control Solutions available



DiaCheck[®] Hb

Haemoglobin Testing System

Methodology:	Electrochemistry
Coding:	Code key
Test range:	0 - 28 g/dL (0 - 17.3 mmol/L)
Hematocrit range:	5 - 78% (calculated)
CE marked	

Corresponding Haemoglobin Test Strips and Control Solutions available



INSTRUMENTS

Urine Strip Reader 40



Throughput: 60 tests/h

Closed system with barcode

Data memory: 2000 patient results

Built-in thermal printer

For all urine strips except 1 parameter & 10ME

CE marked



Urine Strip Analyser 500

Throughput: 500 tests/h

Large touch screen

Closed system with barcode

Data memory: 2000 patient results

Built-in thermal printer

For all urine strips except 1 parameter & 10ME

CE marked

